

From Carol S
Letter to

Letter to

Bill Cue
Cue Construction
775-2454

Letter to:
Native American Corp.

Box 36003

Lynnwood 98046

Talked to
last week

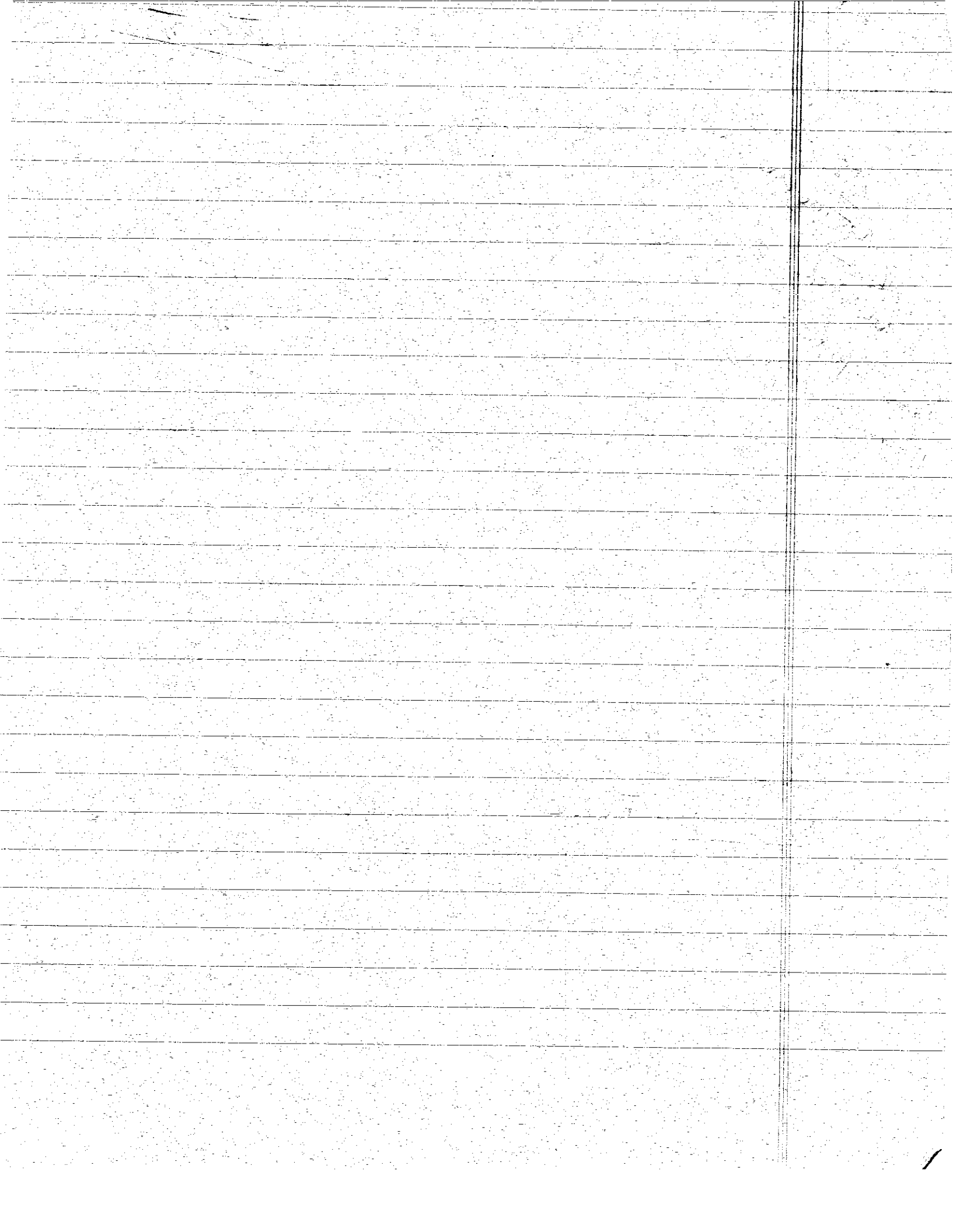
Some info re
Reservation Progra.

Way that you could help,

Scholarship fund #
Give Rudy salary for
helping with program development

Distribution of program information to
possible # contributors

Call Re. help -
Elizabeth Furse - Donate
Congress women.



On campus program in summer.
usually doesn't work in summer.

most students are part-time teachers.

→ Talk to some of communities about teacher education.
Some people at college.

Extension of Reservation Based program.
Graduate School involvement.

Handwritten text at the top of the page, possibly a title or header.

Second line of handwritten text.

Third line of handwritten text, appearing to be a list or series of notes.

Fourth line of handwritten text, continuing the notes or list.

Educational

Educational Services

Jovane Brown Seminar BIR 4117

Hardware:

\$60k ② Office Mobile

Sleeping, library, telephone. 1800
Laptops -

each Com Computers. at computer level.

Software: [Inkjet?]

Each Com. ② TV/Video

Reference Books: NW specific

Proposals already on business

Need Concept description

③ MASTERS in Teaching Program:

integrates into ResBase program:

sta: Gail Trombly Patsy Martin

Title II

Deadline: ?

Time del proposal

Community Faculty

1/2 time position in each Community

4 faculty:

Communication

NW Indian College. pays small contribution.

examples: two live bodies

general description of Role for faculty

\$10k ① Development Money

Bill Cree Construction

on two students

Brochures

Native Corporation

Guest Speakers

Honoraria, Travel

Students & Faculty vote

\$10 \$20k

Scholarship Committee \$10-20k

Raffles. Booth: Tribal Products. Tea, shirts.

UNIT 10: Personal Development

1. Introduction
2. Personal Development
3. Self-awareness
4. Self-esteem
5. Self-confidence
6. Self-discipline
7. Self-control
8. Self-motivation
9. Self-actualization
10. Self-fulfillment

11. Self-acceptance
12. Self-respect
13. Self-love
14. Self-kindness
15. Self-compassion
16. Self-encouragement
17. Self-empowerment
18. Self-empowerment
19. Self-empowerment
20. Self-empowerment

21. Self-empowerment
22. Self-empowerment
23. Self-empowerment
24. Self-empowerment
25. Self-empowerment
26. Self-empowerment
27. Self-empowerment
28. Self-empowerment
29. Self-empowerment
30. Self-empowerment

31. Self-empowerment
32. Self-empowerment
33. Self-empowerment
34. Self-empowerment
35. Self-empowerment
36. Self-empowerment
37. Self-empowerment
38. Self-empowerment
39. Self-empowerment
40. Self-empowerment

T: RB/CD Liberal Arts

12-9-93

Russell Fox
Casual Manager
Sec. Army.

Class Critique:

Makes Students unable to leave "their differences outside the class."

o

Social Services Students (2) added in winter
Makah Planning Students (6) added in winter.

CD I interactive programs - Philips

Program Data?
Goals, objectives

Handwritten notes at the top left of the page.

Handwritten text at the top center of the page.

Handwritten text at the top right of the page.

Handwritten text in the upper right quadrant.

Handwritten text in the middle section of the page.

Handwritten text in the lower middle section of the page.

Handwritten text in the lower left quadrant.

Handwritten text in the lower right quadrant.

Handwritten text in the bottom middle section of the page.



Monday & Tuesday siletz
Econ Develop. Kant Strickler
Carol
Jovana.

Reservation Based Program: Raising funds for.

Montana: [Jovana Brown]
Internet hookups

Voice
406-675-4800
X210

Teleconferencing via Computer. \$4500.00 each side
Jim VERANX Internet address:

FAX 406-675-4801
Evergreen Computer Services Contact.

Fate Pietras
Asst. Dir. Academic
Computing.

Dir. Computing/Telecommunications
Salish Kootenai College

Plato money? Using in instruction. -

Training:
Macintosh system:
~~~~~

Odell contract in by Dec

10/10/10  
10/10/10  
10/10/10

10/10/10

10/10/10

10/10/10

10/10/10

10/10/10

10/10/10

10/10/10

10/10/10

10/10/10

10/10/10

1:30pm TRB/CD

Reference Area [L2300 #

x 6256

Lee Little

Russ Fox

Carol Menigh.

Plan of Action.

Collaborative Education

- Library
- Historical Society
- Secondary Schools

[Potlatch Communications Network]

Themes

- History of tribal government  
Pol. Sci., Soc.
- Social Service  
management
- Environmental Science

- direct link of students.

Draft a Concept Paper Re PCN.

Little

- LittleL@Elvahi.svergen.edu, CommunityNet

Russel Fox #

Moham's?

Colera software program

Victoria Galor

Victoria Free - Net  
Biller paper ser

J Gopher option 9

gato:  
Veronica -

*[Faint, illegible handwriting on lined paper]*

- Longhouse integration of Pas. base Prog.

Handwritten text, possibly a signature or name, written in cursive script.

1-21-94 mtg with JAN \_\_\_\_\_

MASTERS IN Education 2 years of development.

Amplis: in WASHINGTON Patsy Martin  
Estab New Prog.

- A) College develop proposal - to HEC Board
- B) SPI 1065 proposal

7- Standards for Teacher Ed. Prog.

15-20 students

needed  
Higher Ed. Dean  
Support.

(Public Review ie. Deans etc)

Carol Weeks Remaining Copies of Op# 22  
immediate!!!

Build Consensus between these  
Board State Board of Education  
Staff Superintendent of Public Instruction.

Washington State U. Dept of Ed.

has an MFT in Vancouver.

Out Reach Capacity.

Who talk to First

Core Faculty of Masters in Teaching  
program.

March 1994 - Colloquy with Core  
Faculty - after Retreat.

Start date for Program - Autumn 1996-97?  
do a critical path for actually  
arranging the program.